

SITE
5

Travelers' Rest State Park Lewis and Clark Campsite

Nowhere else in the country can you combine wildlife watching with visiting a known campsite of Lewis and Clark.



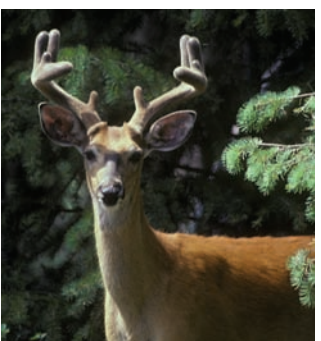
Bruce Lyon

lazuli bunting



Millo Burcham

black-headed grosbeak



Kristi DuBois

white-tailed deer

Species of Note:

- black-headed grosbeak
- warbling vireo
- lazuli bunting
- Lewis's woodpecker
- wood nymph butterfly
- common ringlet butterfly
- beaver
- white-tailed deer
- fox

Field Notes:

Deer, fox, mink and an occasional bear or moose wander the cottonwood bottomlands of Lolo Creek, where beaver dams enhance the wetland habitat. Watch and listen for black-headed grosbeaks, warbling vireo and lazuli buntings. Butterflies, including wood nymphs, common ringlets, and mourning cloaks flit among grasses.

Habitat Link:

The state park is restoring grasslands where exotic plants had overtaken natives. As native grasses and bitterroot flowers are planted, you'll see an increasing diversity of wildlife species.

Cultural Connection:

Lewis and Clark camped here twice – in 1805 and 1806. But they were not first – for centuries, Indian people also camped at Travelers' Rest and harvested the bitterroot, now Montana's state flower.

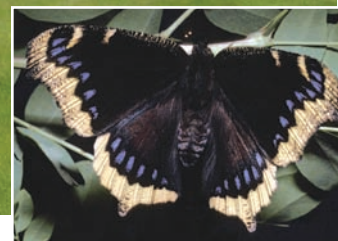
Viewing Tip:

Visit with the staff on site for nature viewing tips and cultural history. Take time to walk the trail to the creek where you'll find the best birding.



USFS

Travelers' Rest State Park

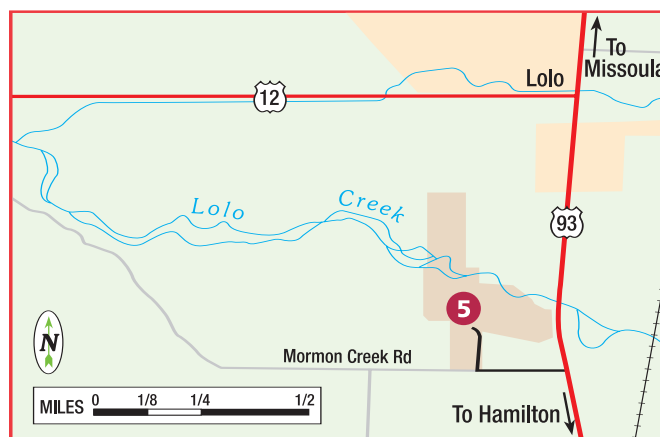


mourning cloak butterfly
Kristi DuBois

Helpful Hint:

The park is open every day from 8:00 a.m. to 8:00 p.m., Memorial Day through Labor Day. After Labor Day, hours

change from 8:00 a.m. to 5:00 p.m. Day use fees are prepaid by residents through vehicle registration and collected here from out-of-state residents.



Getting There:

From Lolo, start heading south on Highway 93. Immediately after crossing Lolo Creek, turn west (right) onto Mormon Creek Road. At .3 mile, look for state park sign, drive down long driveway to the office in an old farmhouse.

Contact:

Travelers' Rest Preservation & Heritage Association. Travelers' Rest State Park, P.O. Box 995, Lolo, MT 59847; (406) 273-4253

Facilities:



Best
Viewing
Seasons: